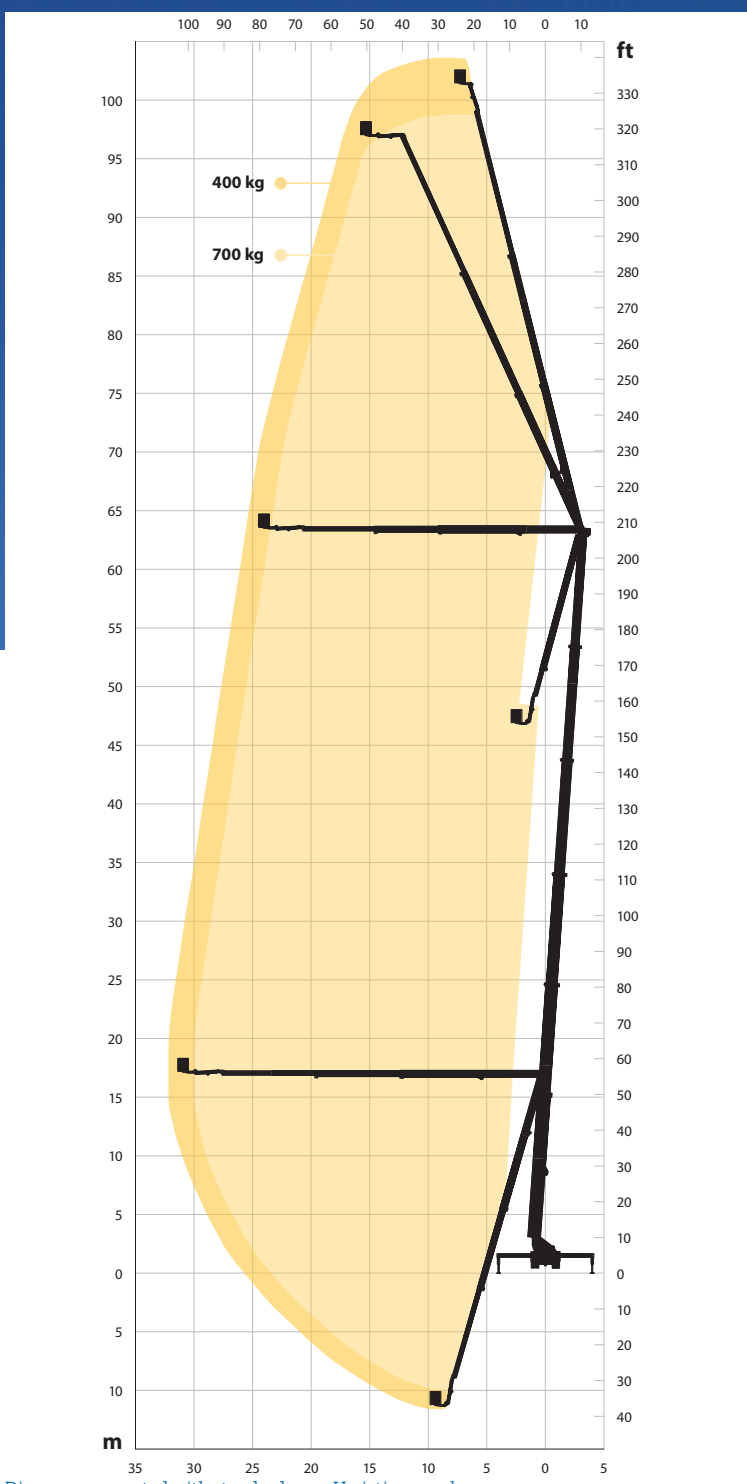




S104HLA




 **104 m**

 **33 m**

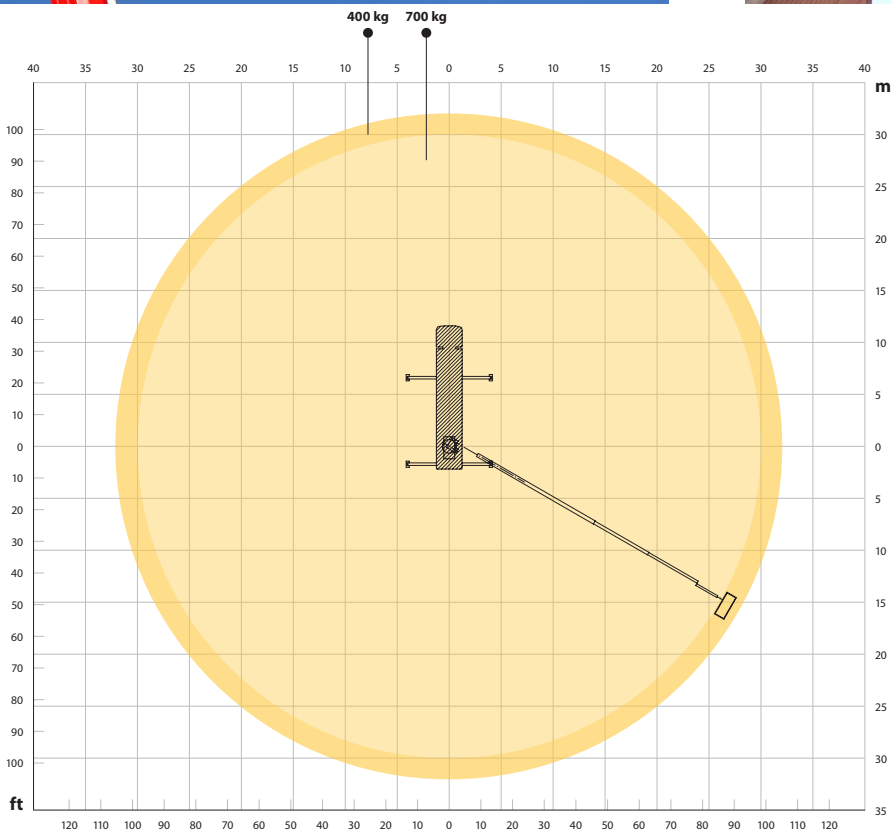
 **102 m**

 **700 kg**

 **1,1 x 2,4 m (3,7 m)**

Diagrams presented with standard cage. Variations apply.

* depending on chassis



2 x 90°



360°



4 * m



16,3 m *



62 t *

Diagrams presented with standard cage. Variations apply.

* depending on chassis

