



# H43 TPX

## Performance

- 42.2 m working height
- 20 m maximum outreach
- Load capacity: 230 kg (2 persons) /450 kg (3 persons)
- 2 axis jib rotation, 150° horizontal and 140° vertical

## Productivity

- Strong, quick and manoeuvrable boom
- Compact and easy to transport
- Faster lifting to full height
- Unequalled all terrain capabilities

## Easy to use

- Continuous movement control
- Continuous outreach control
- Smooth and precise controls



**Haulotte**   
GROUP

More than lifting





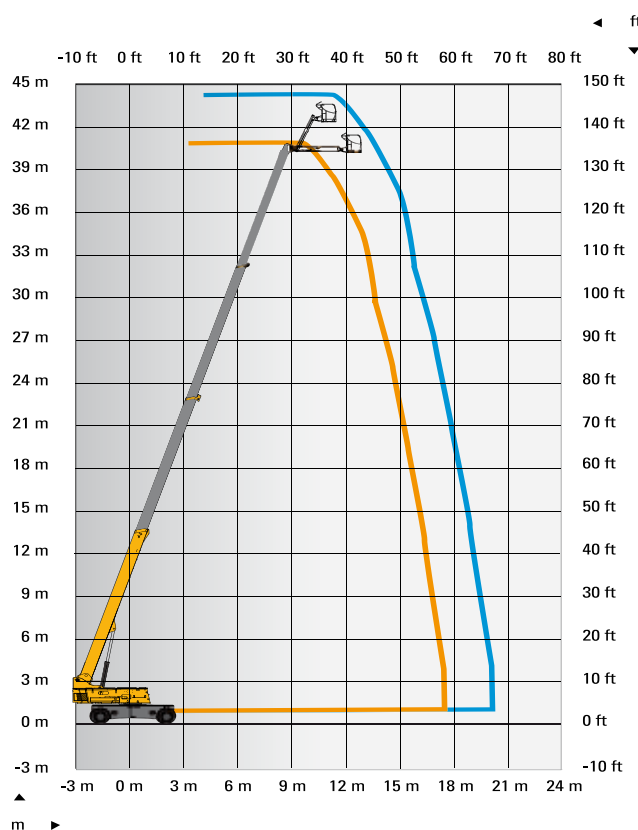
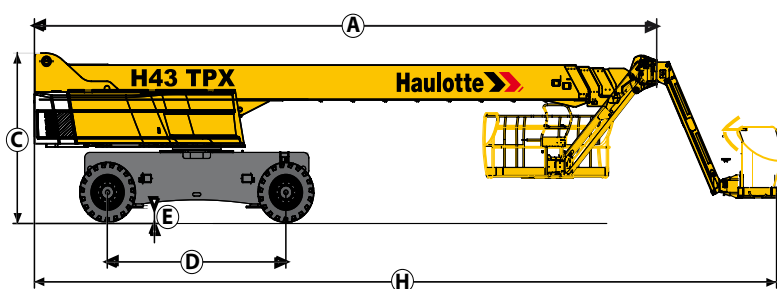
# H43 TPX

## ROUGH TERRAIN TELESCOPIC BOOMS

### TECHNICAL DATA

### H 43 TPX

|                                   |  |
|-----------------------------------|--|
| Working height                    | 42.2 m   |
| Platform height                   | 40.2 m   |
| Horizontal outreach               | 20 m   |
| Lift capacity                     | 230 - 450 kg   |
| <b>F</b> x <b>G</b> Platform size | 2.44 x 0.8 m   |
| <b>H</b> Length - stowed          | 14.5 m   |
| <b>A</b> Length - storage         | 12.3 m   |
| <b>B</b> Width                    | 2.5 m  |
| <b>C</b> Height - stowed          | 3.05 m   |
| <b>J</b> Height - storage         | 3.05 m   |
| Vertical jib rotation             | 140° (+70/-70)   |
| Platform rotation                 | 180° (+90/-90)   |
| Boom rotation angle               | 73° (+73/-0)   |
| Turntable rotation                | 360°   |
| Tailswing                         | 158 cm   |
| <b>D</b> Wheelbase                | 3.5 m  |
| <b>E</b> Ground clearance         | 38 cm  |
| Tilt                              | 4°   |
| Drive speed                       | 0.5 - 5 km/h   |
| Gradeability                      | 40 %   |
| Turning radius - outside          | 5.75 m   |
| Tires - foam-filled               | 445/65-22.5  |
| Engine                            | 55.5 kW - 75.4 hp (Europe) /<br>62.4 kW - 84.9 hp (outside Europe) |
| Weight                            | 20600 kg   |



### STANDARD EQUIPMENT

- Proportional and simultaneous controls
- 4 wheel drive and steer
- 2 extendable axles
- Oscillating axle
- Swing out engine tray for ease of maintenance
- 12 V battery / electrical control system
- Auxiliary power in platform
- Differential lock
- Hourmeter
- Mechanical turret slewing hook
- Towing hooks
- Outside use: withstand winds up to 45 km/h
- Sound and light signal for tilt and weighing
- Gull wing style cowlings

### OPTIONS AND ACCESSORIES

- Onboard generator 3.3 kW and 9 kW
- 230V / 115V - 16A power platform
- Biodegradable hydraulic oil
- Travel alarm
- Rotating beacon
- Working light

